

NZSAR

New Zealand Search
and Rescue



Wander Symposium

Sunday 10 August 2014





New Zealand Search and Rescue Council

“NZSAR will provide effective search and rescue services for people in distress throughout New Zealand’s search and rescue region in order to save lives”.



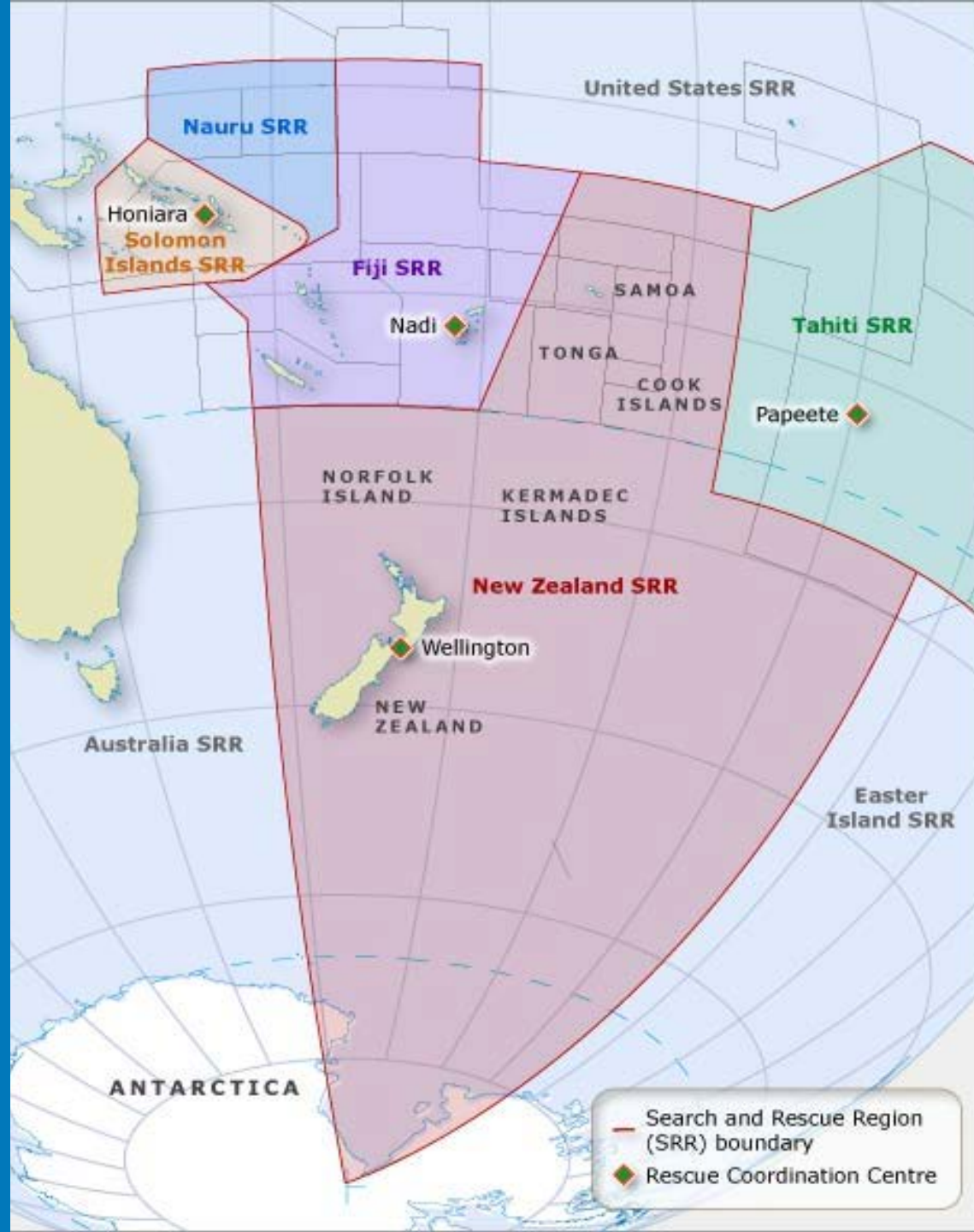
LEADING SAFETY, SECURITY AND ENVIRONMENTAL PROTECTION

Our Responsibility

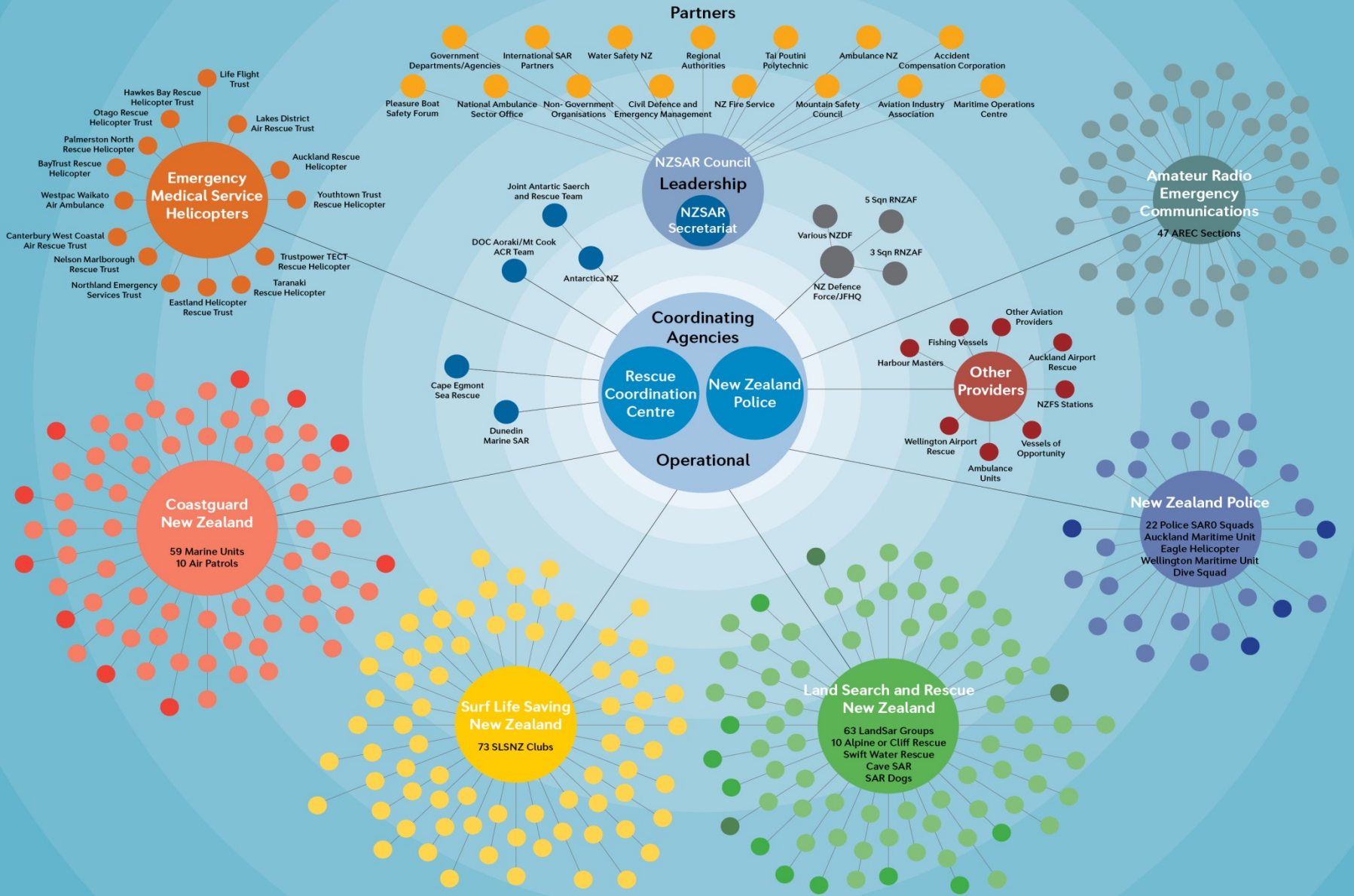
NZ's Search and Rescue Region (SRR)

- One of the largest in the world
- 5 degrees south of the equator to the South Pole;
 - half way to Australia and
 - half way to Chile
- Approximately 30 million square kilometers.

NZSAR
New Zealand Search
and Rescue



OUR SECTOR

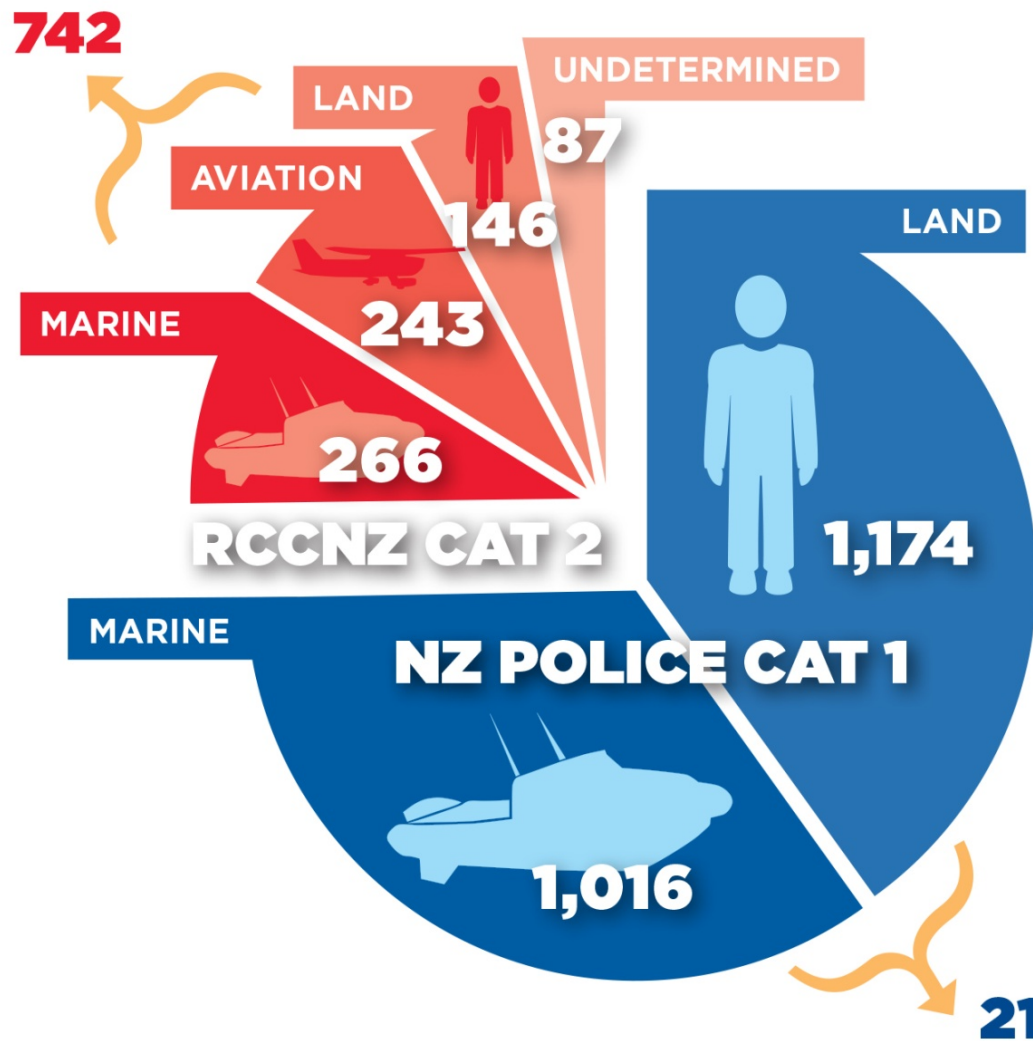


NZSAR Goals

- A robust and integrated SAR system
- Efficient and sustainable SAR organisations
- Capable SAR people
- Reduced Demand for SAR services



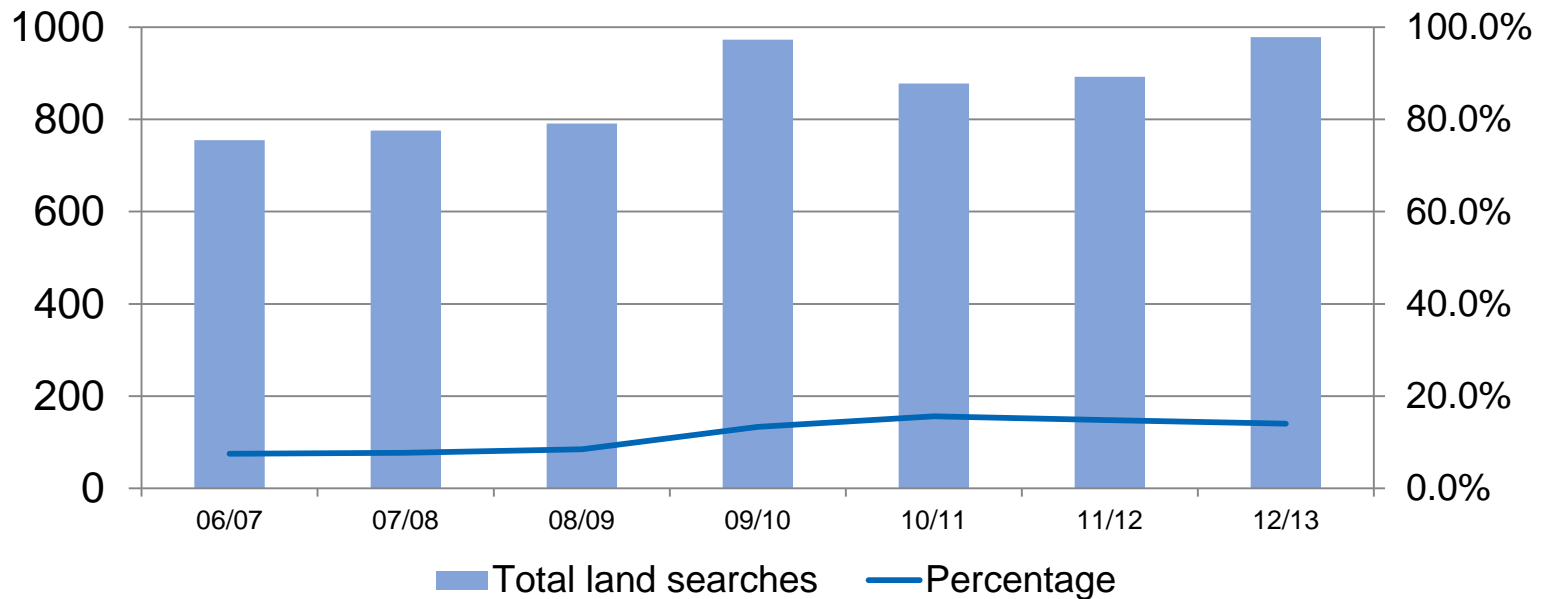
SAR INCIDENTS IN 2012/13



2,932 SAROPs (average 8 per day)



Wander SAR Incidents

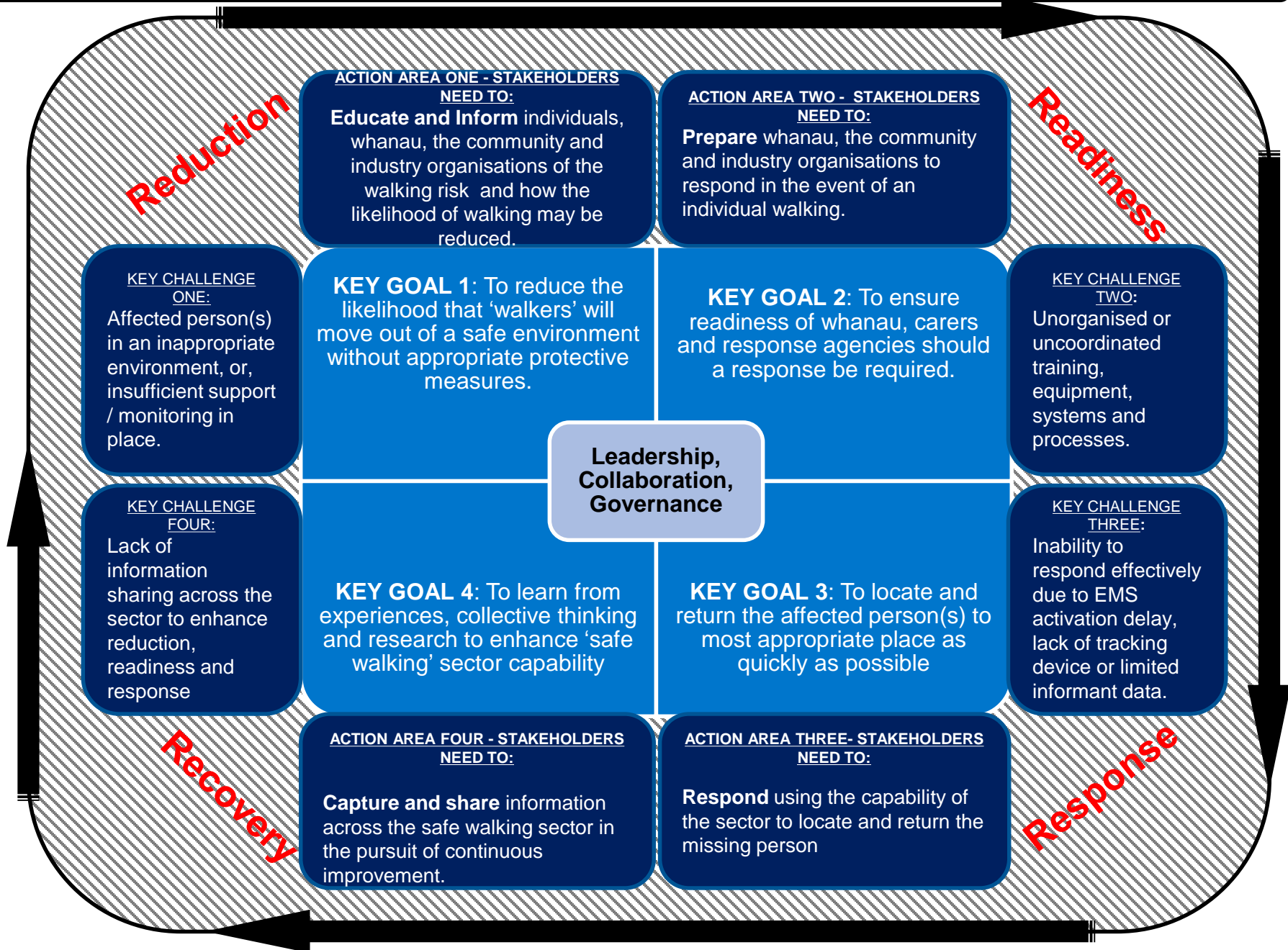


- Average 134 per year over the last four years
- Approximately 14.5% of all land search and rescue work
- Known to be **significantly** under reported



WANDER PARTNERSHIP FRAMEWORK – SUPPORTING ‘SAFE WALKING’

‘Supporting, educating and reducing the risk of people that, potentially or actually, get lost or go missing due to cognitive impairment in NZ’.



Wander Stakeholder Reference Group

Last meeting December 2013

Purpose “To collectively engage and provide sector leadership and governance in order to achieve positive outcomes for the wander sector.”

- ✓ Autism NZ
- ✓ LandSAR
- ✓ Alzheimer's NZ
- ✓ Ministry of Health
- ✓ NZSAR
- ✓ NZP
- ✓ IDEA (IHC)
- ✓ Ministry of Social Development
- ✓ Aged Care
- ✓ NZ Disability Support Network



Language & Terminology

- Wander
- Safer Walking
- Bolters
- Cogitative impairment
- Secure (place/environment etc)

Please don't get to caught up in the language.

Today???

- We want to assist you to succeed.
- We don't have a big pot of gold.
- What things to we all need to do to achieve these sorts of things?
 - A robust and integrated **Wander** system
 - Efficient and sustainable **Wander** organisations
 - Capable **Wander** people
 - Reduced Demand for **Wander** SAR services



National Wander Network Symposium

Vanessa Pullan

Clinical Advisor

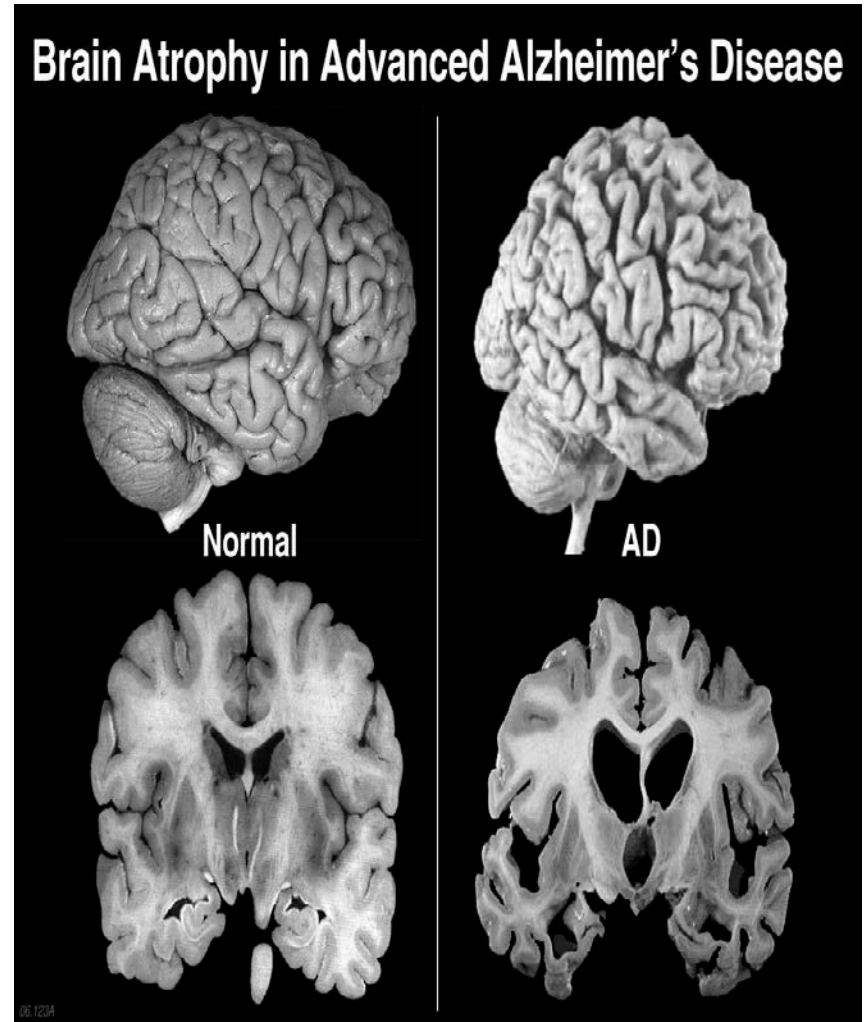
Alzheimers New Zealand

Presentation Outline

- Dementia overview
- Role of Alzheimers New Zealand and our Members
- Current involvement with wander services
- Why this work is important to us

Dementia

Dementia is an umbrella term used to describe a group of diseases that cause physical changes and damage to the brain



Dementia

Most common in the older adult, but can affect people in their 40's and 50's

Causes and types of dementia include:

- Alzheimers disease
- Lewy Body disease
- Vascular disease
- Fronto-temporal dementia
- Alcohol related dementia

Dementia

Symptoms may include:

- Loss of memory
- Difficulty in finding the right words or understanding what people are saying
- Difficulty in performing previously routine tasks
- Personality and mood changes

Role of Alzheimers New Zealand and our Members

Nationally, we:

- Raise awareness of dementia
- Provide information and resources to the public, Government, health professionals and service providers
- Advocate for high quality services for all people affected by dementia
- Promote research about prevention, treatment, cure and care of people affected by dementia

Role of Alzheimers New Zealand and our Members

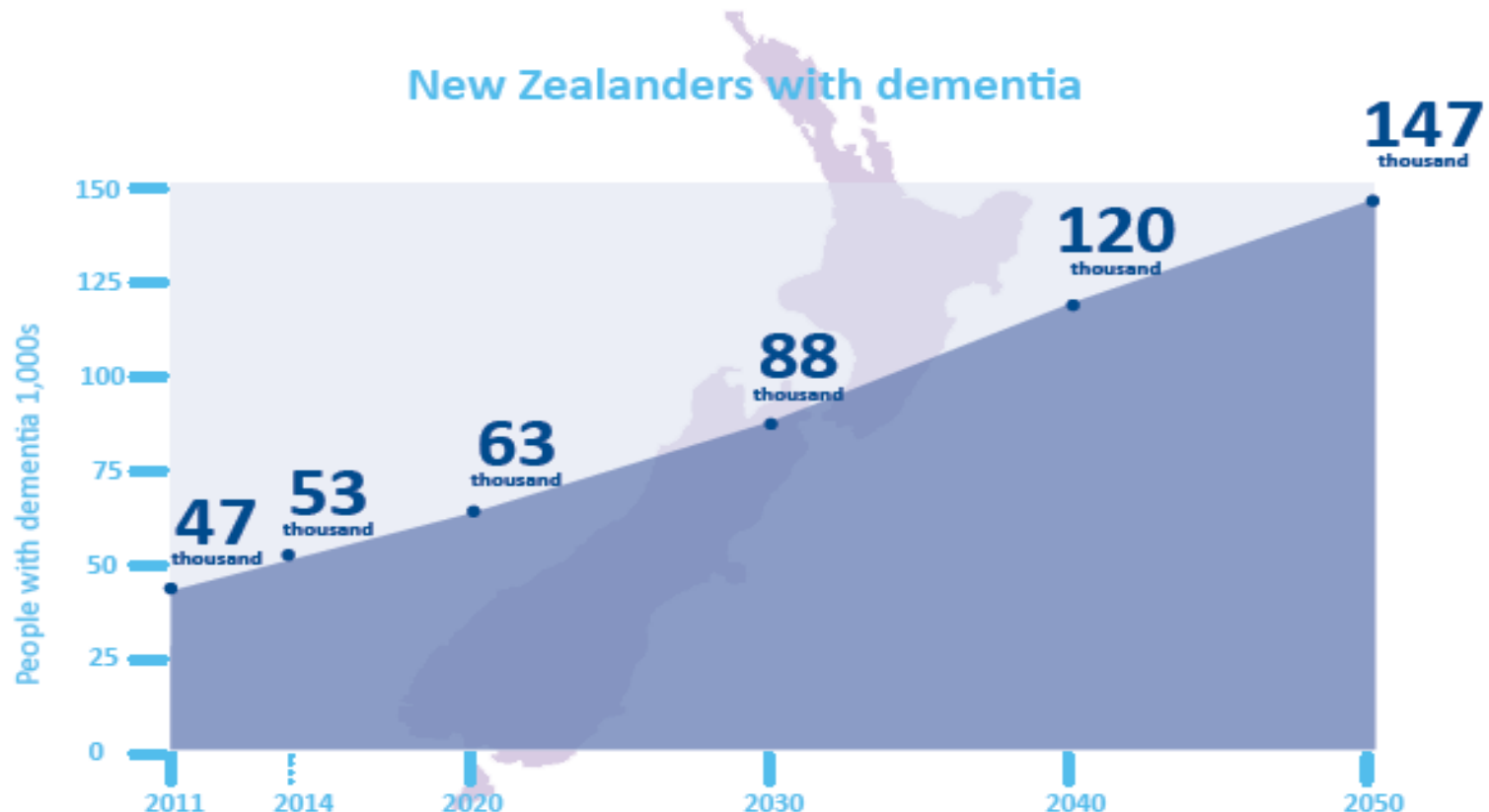
Locally, we:

- Provide information and education to assist with understanding and living with a diagnosis of dementia
- Support family/whānau, friends to cope with the demands of caring
- Provide support groups and day programmes for people affected by dementia

Current involvement with wander services

- Provision of Wandertrak services by some of our Members
- Education to other wander services
- At a national level, Alzheimers New Zealand is a member of the Wander Stakeholder Reference Group

Why is this work important to us – increasing dementia prevalence



Why is this work important to us – *Dementia: A Strategic Framework*



VISION: TOWARDS A WORLD WITHOUT DEMENTIA

GOALS

A dementia friendly New Zealand

Good brain health

Early recognition and assessment

Living well with dementia

High quality services

STRATEGIES

Creating a national culture of awareness, understanding and acceptance of people affected by dementia

Promoting te whare tapa wha - whānau (family), tinana (physical), hinengaro (mental) and wairua (spiritual) health

Strengthening access to accurate, timely diagnosis

Strengthening the voice of people with dementia

Working together across the entire dementia community

Strengthening the health system to anticipate the challenge of dementia

Growing research-based knowledge of dementia and brain health, from prevention to cure

Promoting full and appropriate assessment

Supporting people with dementia to fulfil their individual needs safely and well

Building resources, readiness and capability to respond to changing demand

Providing opportunities for meaningful input by, participation of, and engagement with people with dementia

Sharing new findings within the dementia community

Promoting clear pathways and access to support, intervention and treatment

Encouraging personal planning for the future course of dementia, including dying

Promoting person-centred care across the dementia pathway

Increasing dementia risk awareness

Enabling family/whānau/support people to promote their ongoing wellbeing

Lifting the quality of and consistency of dementia related services - from diagnosis to end of life

What we would like to see

- Better services and outcomes for people living with dementia in the community
- Increased knowledge and skills within the wider sector of dementia
- Nationally consistent services – not reinventing wheels
- Stakeholders working together – less fragmentation
- Robust processes, policies and procedures

Questions



The Marlborough Example



Marlborough LandSAR

WanderSearch Callouts

Jan 2013 - present



Police Role **WAS**



- Liaison between agencies
- Assessment of clients for pendant allocation.
- Allocation and administration of the pendants.
- Cost recovery of new pendants and battery replacements
- Maintenance and holding of pendant wearer records.
- 6 monthly battery checks and replacements.
- Initiate/coordinate searches.

Is Now

- Liaison between agencies
- Holding of Watchroom copy of patient records
- Initiate/coordinate searches.



The Change?

Alzheimer's Marlborough

- Assessment of clients for pendant allocation.
- Allocation and administration of the pendants.
- Maintenance of pendant wearer records
- 6 monthly battery checks and replacement.
- Cost recovery of new pendants and battery replacements



Alzheimers Marlborough



LandSAR Marlborough

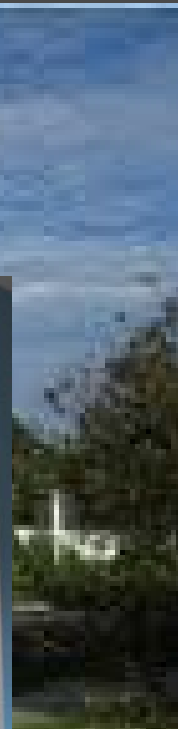


NZ Police









Management and Retention of Volunteers



A close-up photograph of a man's face as he looks through a pair of black binoculars. The background is a clear, bright blue sky. The text "Key Issues Ahead" is overlaid in the lower half of the image in a bold, yellow, sans-serif font with a white outline and a slight drop shadow.

**Key Issues
Ahead**

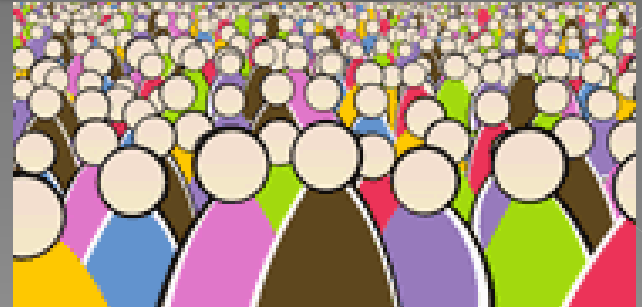
Battery Life and replacement



Pendant design



Extending client base



Summary

1. Sustainable structure
2. Funding of pendants and equipment
3. Recruitment and retention
4. Batteries
5. Pendant design
6. Client base

WanderSearch Auckland Charitable Trust

Bringing Wanderers Safely Home

Time Line



- 2008 a decision was made to develop Wandatrak programme in Auckland
- April 2009 1st pendant issued
- April 2009 1st successful search using the technology
- 2013 Plan to move to new entity
- 2013 WanderSearch Auckland Charitable Trust Formed
- 2013 WanderSearch brand owned by the Trust on behalf of WanderSearch NZ
- April 2014 Delanie Halton employed
- July 2014 Alan Wilkinson contracted to carry out research

Bringing Wanderers Safely Home

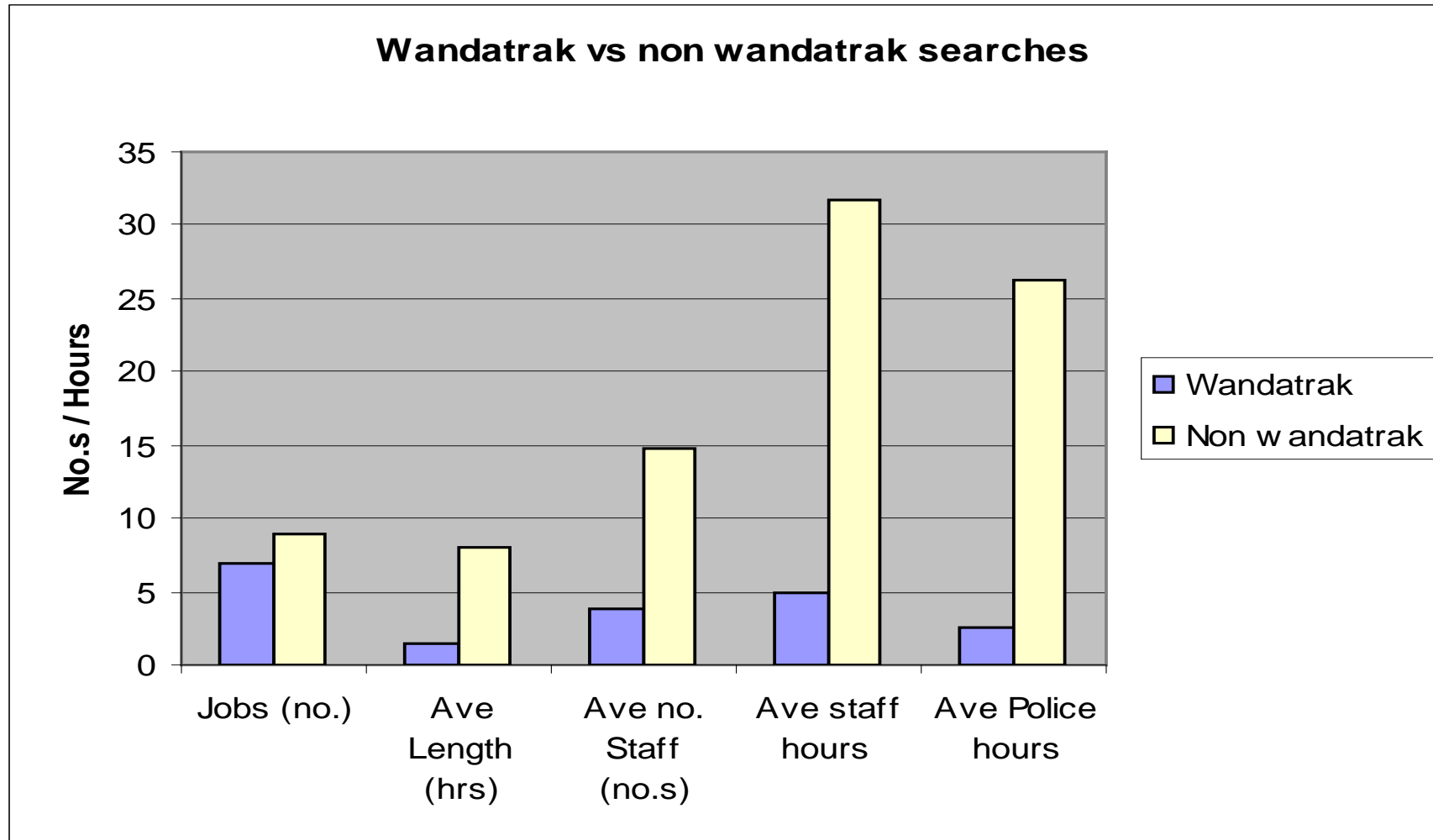
Is there a Need ?

- On average there are 2 people a day with dementia reported missing in the greater Auckland area.
- A lot of time is being spent looking for these people.
- Most of the search time was unproductive and on most occasion's the searchers are not finding the wanderers.

History

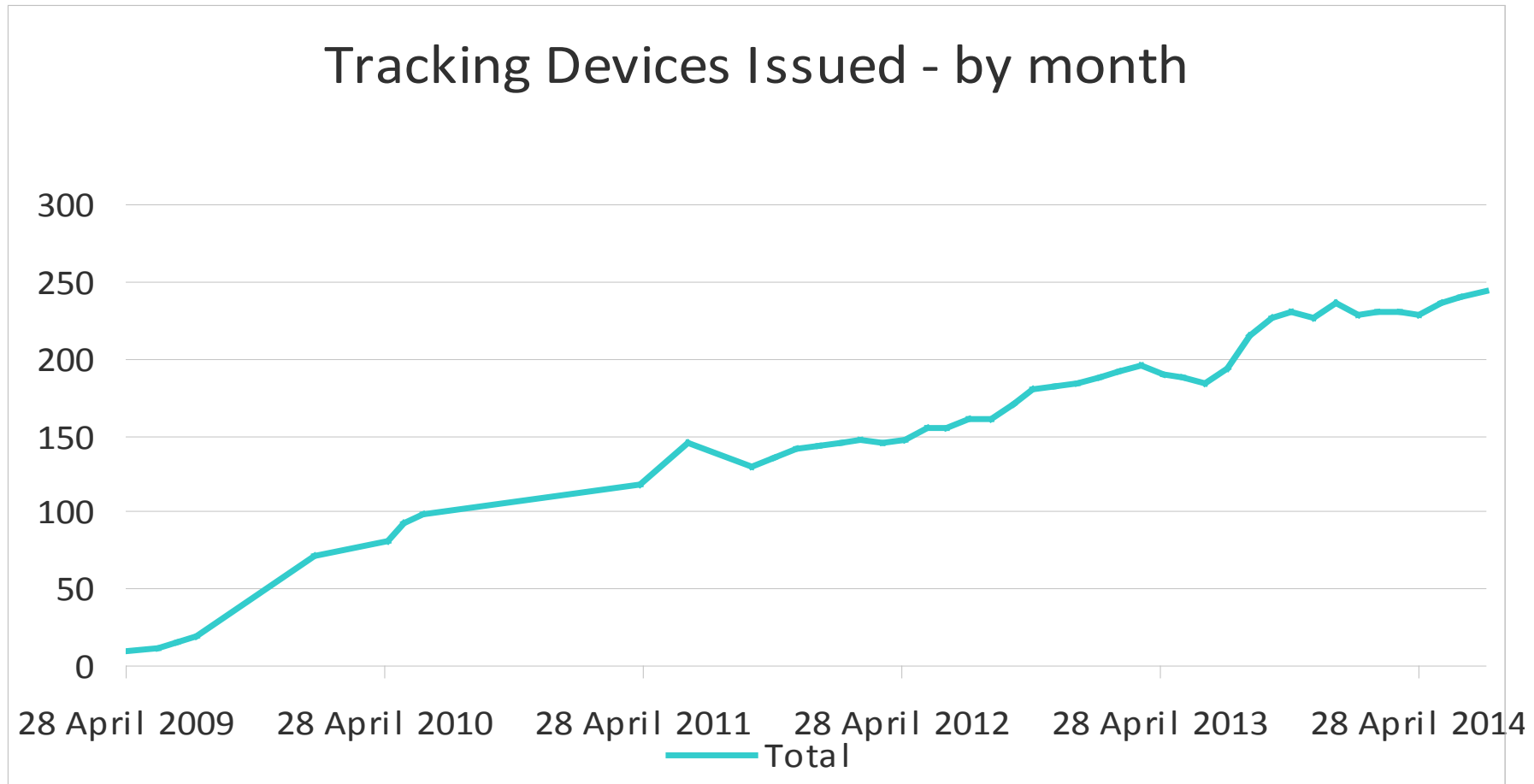
- Adopted by Auckland Police SAR and LSAR in 2008, at this stage called Wandatrak
- Although thought of as a good idea, many LSAR were not keen on doing the work or of it being under the umbrella of LSAR
- The main principal set was: "That it was for all people who needed it, not those who could afford it".
- Initially most of the work was done by LSAR with input from police employees.

Early Stats



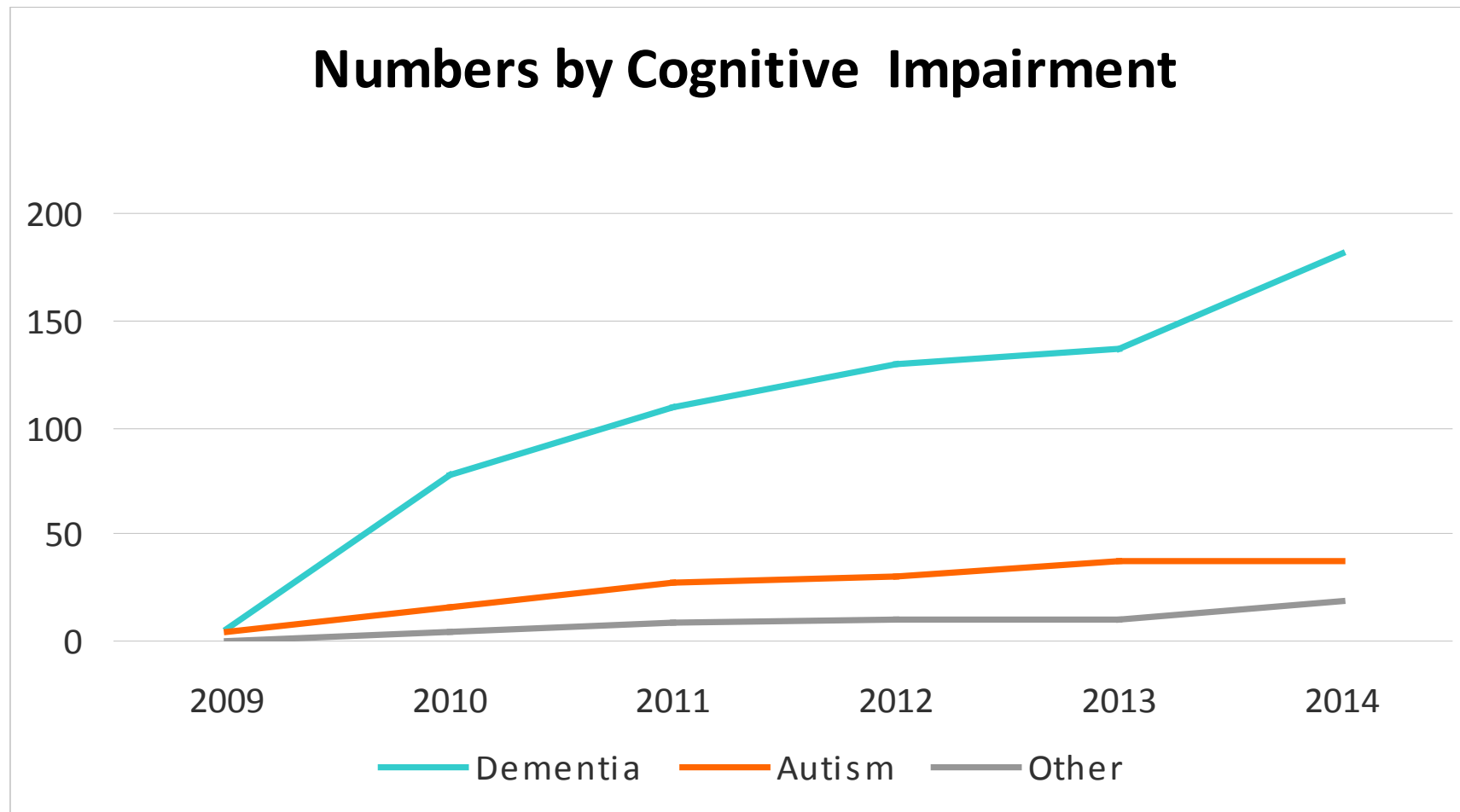
Bringing Wanderers Safely Home

Growth



Bringing Wanderers Safely Home

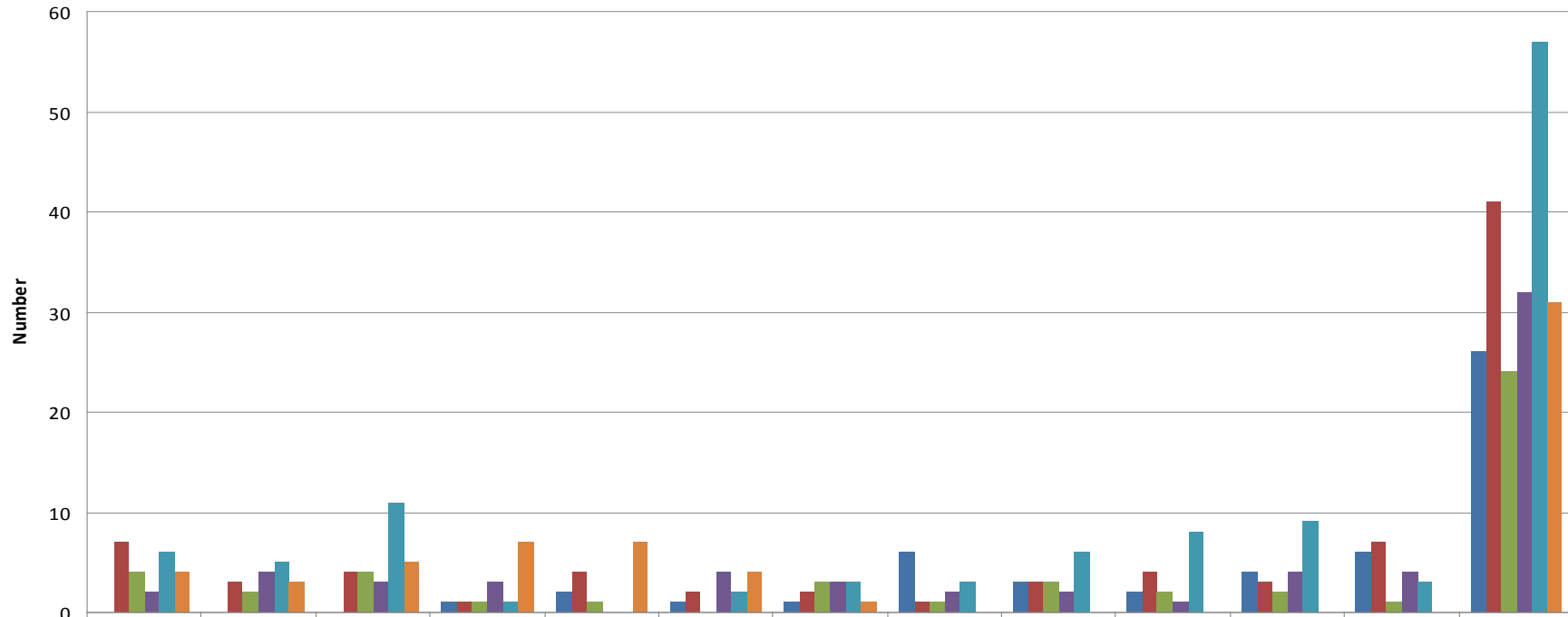
Who wears the pendants



Bringing Wanderers Safely Home

Searches

No.of searches (Pendant Wearers)/month



	Jan	Feb	Mar	Apr	May	Jun	Jul	Aug	Sep	Oct	Nov	Dec	
■ 2009	0	0	0	1	2	1	1	6	3	2	4	6	26
■ 2010	7	3	4	1	4	2	2	1	3	4	3	7	41
■ 2011	4	2	4	1	1	0	3	1	3	2	2	1	24
■ 2012	2	4	3	3	0	4	3	2	2	1	4	4	32
■ 2013	6	5	11	1	0	2	3	3	6	8	9	3	57
■ 2014	4	3	5	7	7	4	1						31

Bringing Wanderers Safely Home

Changes

The Police Attitude

- Understood the value of the programme
- Did not feel that it was the responsibility of police to own it or fund it
- Decided not to put any resources into the programme
- The programme was close to collapse even though it saved police 100's of man hours and \$100,000's in search costs.

Changes cont.

LSAR Attitude

- Both National and local did not want full involvement in the programme
- Both wanted to focus on response
- Minimal support given to the people trying to save the programme
- Pressure applied to move the programme away from LSAR

Who should own WanderSearch ?

- Everyone wants someone else to take responsibility for WanderSearch
- When someone is missing, it is the responsibility of police to locate that person
- The WandaTrak equipment is just a tool that can be used to assist Police in locating the person quickly

Where to from here?

- Agreed with Auckland LSAR to transition the programme to a separate entity
- Delanie Halton employed under contract to manage the programme while entity being set up
- Group of like minded people get together to take WanderSearch into the future

Advantages of a new Trust

- Access to additional funding
- Main focus of the Trust is management of the programme

Disadvantages of a new Trust

- No national organisation to set standards
- Have to start from scratch to build up a history and reputation
- LSAR is a national brand and can put backing behind it
- LSAR already have a relationship and SLA with Police
- The volunteers in SAR still wanted to do the work and be part of it
- SAR knowledge needed when speaking to families

WanderSearch Auckland



- A Charitable Trust was formed
- Independent of any other organisation
- Informal agreements with Auckland Police SAR and Auckland LSAR
- Development of a Guiding Principals document for WanderSearch
- Planning to form WanderSearch New Zealand

Bringing Wanderers Safely Home

Guiding Principals



- Acknowledges the right of all cognitively impaired individuals in the Auckland region to be kept safe in their home environment.
- Respects the privacy of its clients and their families and caregivers, and the confidentiality of any information given to WanderSearch Auckland.
- Treats all its clients and their support people with dignity and courtesy.
- Ensures its services are available to all clients according to their need, not according to their ability to cover associated costs.

Bringing Wanderers Safely Home

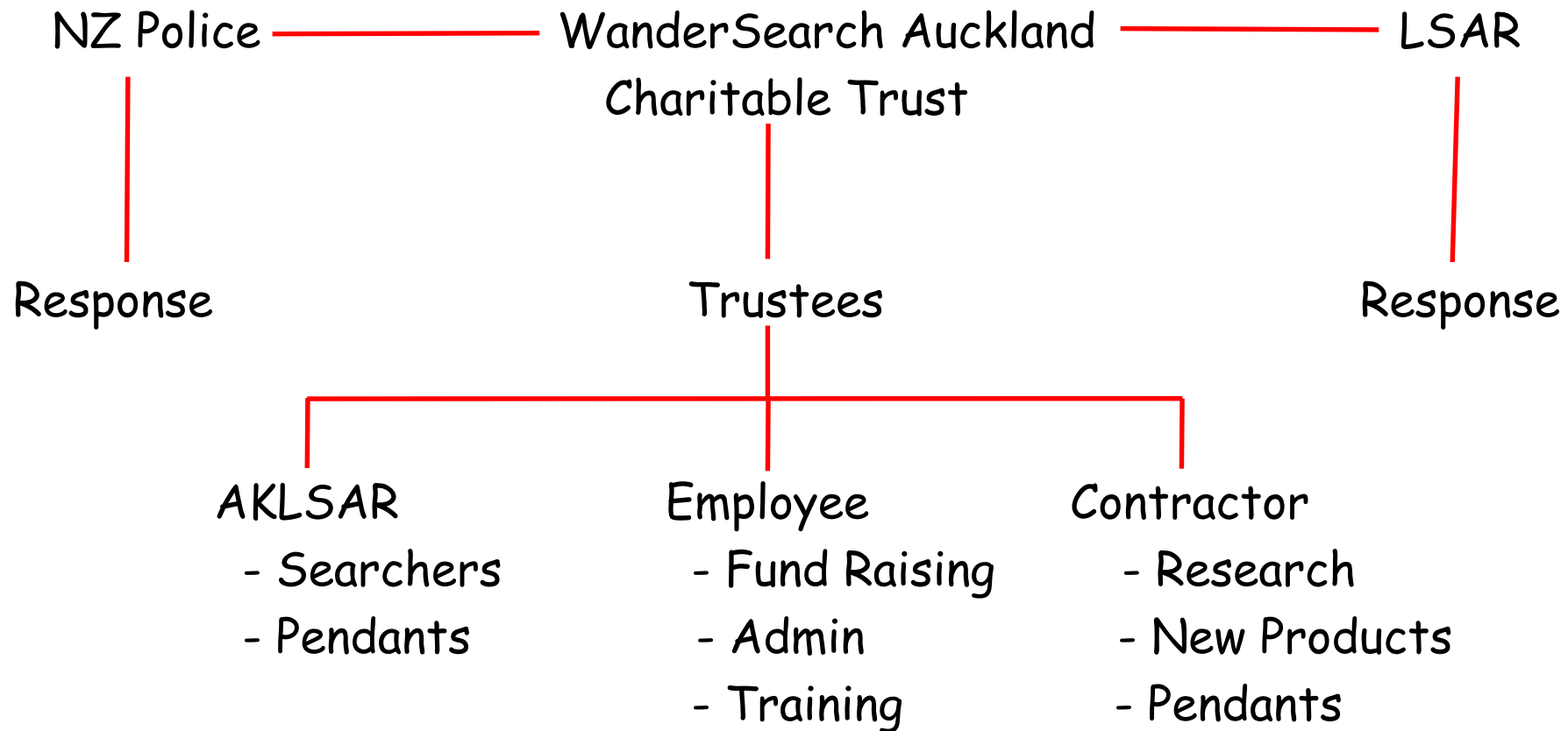
Guiding Principals



- Endeavours to find a wandering client in the speediest manner possible using the most reliable equipment and methods
- Partners with agencies and organisations collaboratively and professionally.
- Upskills its volunteers in tracking systems, in interpersonal skills and shows appreciation for their efforts to support WanderSearch Auckland.
- Manages its funds to maximise its front-line services.

Bringing Wanderers Safely Home

STRUCTURE



Bringing Wanderers Safely Home

Funding



- WanderSearch Auckland Charitable Trust receives no funding from any National or Govt body
- All monies received to date has been either through application for grants that have been successful or from donations from pendant wearers, their families or the public
- Funding is an ongoing and time consuming issue. It is imperative that adequate funding is received per year to enable continuation of the program
- Funding is required for wages, new pendants, battery changes, R & D, Volunteer Kms, admin costs, phone, advertising and marketing, travel to name a few.

Funding cont.

Since 2009 WanderSearch Auckland has raised over \$320 000 to keep this programme going:

- Donations from public / families
- Grants
- Donations from businesses

TRAINING

- This is delivered through Auckland Land Search and Rescue.
- It is provided to all Akl LSAR volunteers
- Involves principles of use, actual usage of equipment in the outside world, best methods and techniques to use in searching
- Training is carried out at least twice a year
- To ensure we maintain our volunteers we pay them a Km rate for use of their vehicles.
- We are fortunate that we have complete "buy-in" by ALSAR members

The Good Work already done



- Liaison with the manufacturer improving design and productivity for New Zealand
- Change and ownership of generic name to WanderSearch
- Writing of SOP,s and a User's Manual
- Monthly newsletter to network with other groups
- Assist other groups in setting up, training and fundraising

Bringing Wanderers Safely Home

Research

- Overall picture of wanderers in New Zealand using the Police Card system
 - Who goes missing
 - How long and when
 - Who finds them and where
- Improving current technology
 - New designs of pendants
 - Lockable straps
- New Technology
 - Testing GPS devices

Today

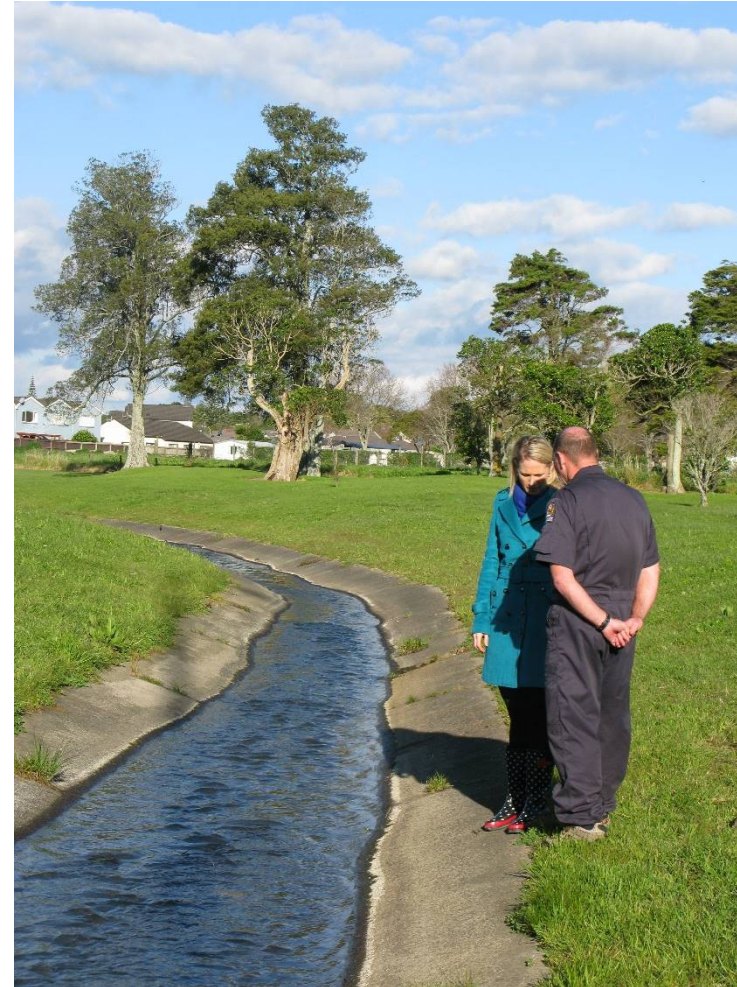
- A Trust with 4 trustees
- One full time employee
- One contractor
- >10 ALSAR volunteers
- 250 clients
- 200+ callouts
- Many lives saved

One successful programme

Bringing Wanderers Safely Home

A Successful Search

- 30 Aug 2013, dark, cold, wet evening.
- 82 yr old male reported missing at approx. 1930 hrs
- First unit in area approx. 1945 hrs
- Client located at 2005 hrs lying on his back in an aquaduct
- Unable to be seen or heard by anyone on the nearby road.
- Closest houses were about 30 metres away behind 6 foot high fences.
- Water was thigh deep
- Located via the tracking watch
- Client was suffering from mild hypothermia



Bringing Wanderers Safely Home

This is were Wellington's

WanderSearch

journey

began...

Auckland





**SALES
PITCH**

Wellington Police District



Wellington Police Search & Rescue has responsibility for Wairarapa but Wairarapa as an 'Area' has its own squad and run independently.

Current Situation:

Dementia within New Zealand...

- Affects 40,746 people
- By 2050 it is estimated there will be 146,699 people living with dementia
- The total financial cost of dementia in New Zealand in 2008 is estimated at \$712.9 million.

What does this mean for Wellington?

In the current reporting year (2011/2012) there has been...

237 calls to Duty SAR officer for advice from Comms, this includes
26 calls for those suffering Alzheimer's or mental impairment.

5 calls for Autistic children

4 complete call outs of Police SAR and WLSAR Volunteers solely
for the mentally impaired.

Plus all of the unrecorded (by SAR) hours of GDB time.

A single search for a non pendant wearer in an urban environment
may take 20+ people anywhere between 6 – 8 hours.

Nationally, Wanda Trak searches are taking two people between
15 minutes to two hours.

Our Mission...

To support those affected by Alzhiemers/Dementia, or mental impairment that are known to wander.

This will also result in meeting our objectives of Confident, Safe and Secure Communities.

Support is for those affected, their family, and or those caring for them.

It will also meet our Police Model of reducing demand on staff when effected people go missing, it will allow us to keep families informed, and provide a timely and sensitive response.

The method we have chosen and is also being used extensively throughout many parts of the country is **WandaTrak**

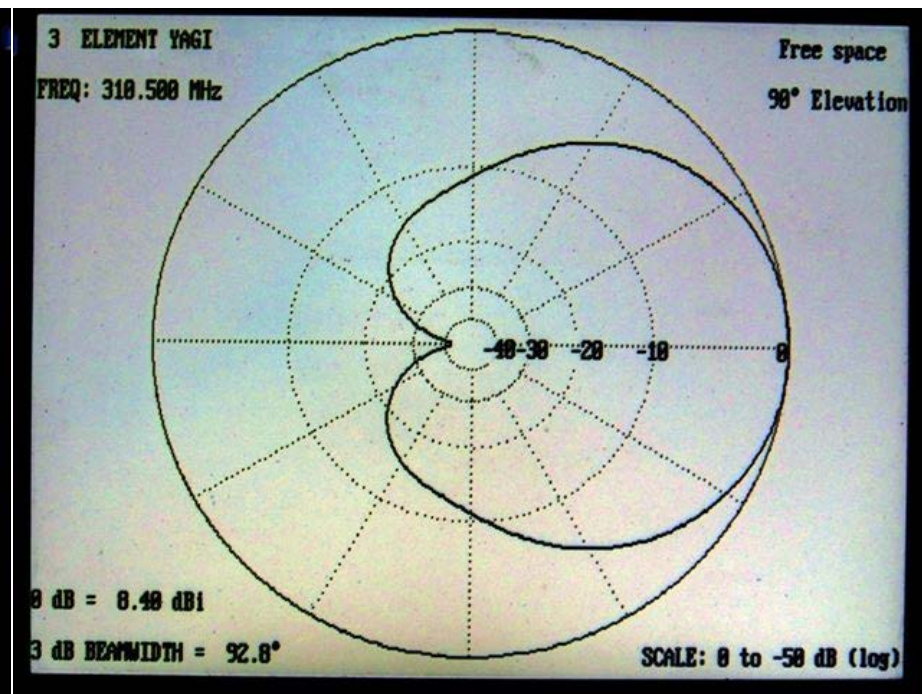
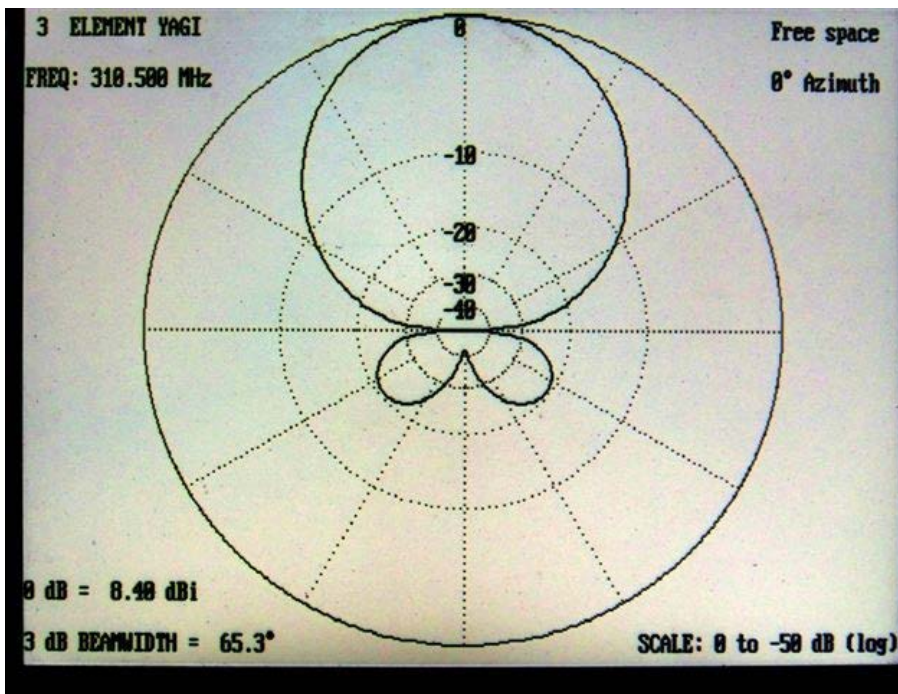
Wandatrak pendants are continuously transmitting a known radio frequency.



When a pendant wearer is reported as missing, Police will then deploy a ground unit comprising of a trained LandSAR and or Police SAR squad member with Direction Finding (DF) equipment.



Wandatrak searches are reportedly taking 1 – 2 hours (as short as 15mins) instead of the 6 – 8 hours by up to 20 people historically seen for dementia/ mental impairment searches.



Pendants will be issued on a need/demand basis in consultation with a welfare organization (Alzheimer's Soc., Autism Soc.), GPs, Primary care givers, and concerned and responsible Next of Kin.

It is planned that administration and ownership of all equipment will remain in Wellington. Wellington LandSAR and Police will provide the operational arm of trained searches to facilitate any rescue or return.

Tracking units will be stored in **Wellington, Hutt , and Kapiti-Mana.**



Spreading the word...

Autistic boy missing near Wainuiomata found alive

Family reunited with missing autistic child

Last updated 08:13 28/10/2012



Ryan Peel of Churton Park with his father Edward Peel, sister Kiera and step mother Diana Globina. KEVIN STENT/Fairfax NZ

Hutt Valley

- Skatepark petition wins supporters
- Whanau links helping hospital
- Barking mad over dog registration fees
- Host of party where woman died sentenced for drugs
- Her block planned for High St

Ad by Google

Compare Top 40 CRM Apps [Business Software.com/Res CRM](#)
2014 Top 40 CRM Software Rankings . Don't make CRM Deck boys without it

A 5-year-old autistic boy was last night reunited with his relieved family when searchers found him wet and shivering in a creek bed after five harrowing hours alone in the bush.
Ryan Peel from Churton Park ran off during a walk in the

How do we currently operate?

Under a trust...

The Wellington Wander Search Charitable Trust

Why we chose a Charitable Trust Model rather than an incorporated society.

1. A group needs a minimum of 15 members to become an incorporated society.
2. An incorporated society has to hold an annual general meeting.
3. The group is run by a committee and major policy decisions require a membership vote.

Questions?

None of this could have happened without the support of:

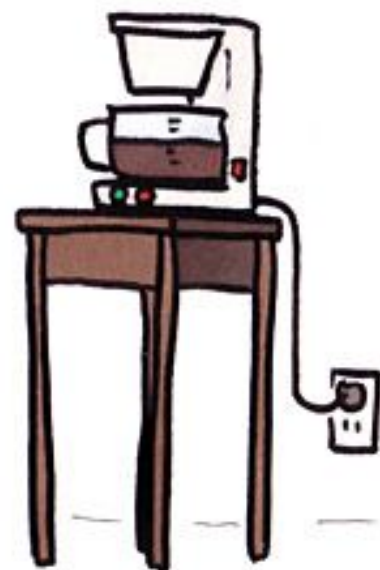
Jack Jeffs Charitable Trust

Pub Charity

Wellington Land SAR

...and Auckland SAR/LSAR for sharing their knowledge.

I NEED COFFEE



BUT IT IS TOO FAR AWAY